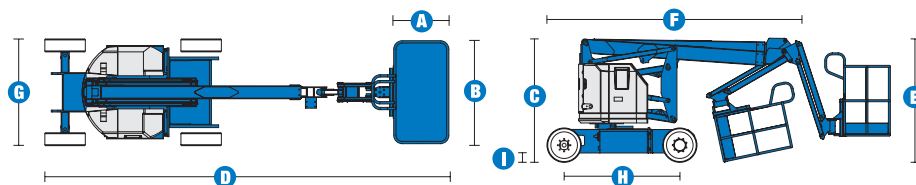
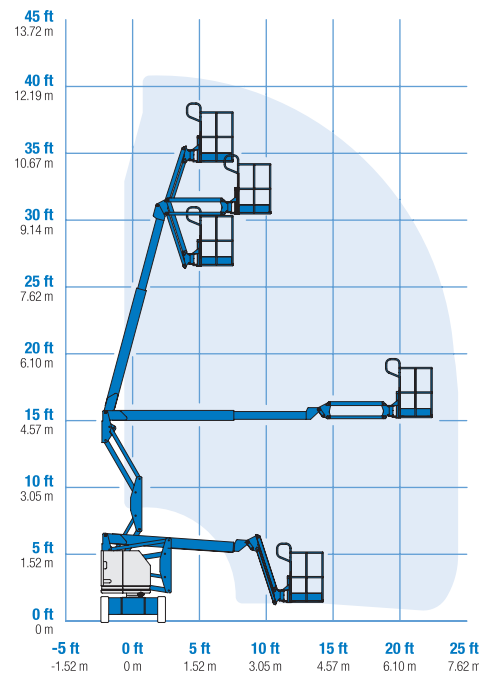


# Specifications



## RANGE OF MOTION Z™-34/22N



MODEL		Z™-34/22N	
MEASUREMENTS	US	Metric	
Working height maximum*	40 ft 6 in	12.52 m	
Platform height maximum	34 ft 6 in	10.52 m	
Horizontal reach maximum	22 ft 3 in	6.78 m	
Up and over clearance - at platform	15 ft 3 in	4.65 m	
at jib	15 ft 2 in	4.62 m	
<b>A</b> Platform length	2 ft 6 in	.76 m	
<b>B</b> Platform width	4 ft 8 in	1.42 m	
<b>C</b> Height - stowed	6 ft 7 in	2.00 m	
<b>D</b> Length - stowed	18 ft 9 in	5.72 m	
<b>E</b> Storage height	7 ft 5 in	2.26 m	
<b>F</b> Storage length	13 ft 9 in	4.19 m	
<b>G</b> Width	4 ft 10 in	1.47 m	
<b>H</b> Wheelbase	6 ft 2 in	1.88 m	
<b>I</b> Ground clearance - center	5.5 in	.14 m	

PRODUCTIVITY		
Lift capacity	500 lbs	227 kg
Platform rotation	180°	
Vertical jib rotation	139°	
Turntable rotation	355° non-continuous	
Turntable tailswing	zero	
Drive speed - stowed	4.0 mph	6.4 km/h
Drive speed - raised**	0.68 mph	1.1 km/h
Gradeability - stowed***	35%	
Turning radius - inside	7 ft	2.13 m
Turning radius - outside	13 ft 5 in	4.08 m
Controls	24V DC proportional	
Tires (solid rubber, non-marking, treaded)	22 x 7 x 17.75 in	.56 x .18 x .45 m

POWER		
Power source	48V DC (eight 6 V batteries 315 Ah capacity)	
Auxiliary power unit	24V DC	
Hydraulic tank capacity	4 gal	15.1 L

WEIGHT****		
	11,400 lbs	5,171 kg

**STANDARDS COMPLIANCE** ANSI A92.5, CSA B354.4, CE Compliance, AS 1418.10, PB-10-611-03

\* The metric equivalent of working height adds 2 m to platform height. U.S. adds 6 ft to platform height.  
 \*\* In lift mode (platform raised), the machine is designed to operate on firm, level surfaces only.  
 \*\*\* Gradeability applies to driving on slopes. See operator's manual for details regarding slope ratings.  
 \*\*\*\* Weight will vary depending on options and/or country standards.